

### DIRECT SOLENOID VALVE SV32

#### DESCRIPTION

3/2 way solenoid valves are available as single station units and they are designed for use with compressed air mainly applied where on-off control is required with pneumatic actuators.

**OPTIONS:** Other versions under request

**USE:** Pneumatic actuator control among others

**AVAILABLE MODELS:** SV32C, SV32H

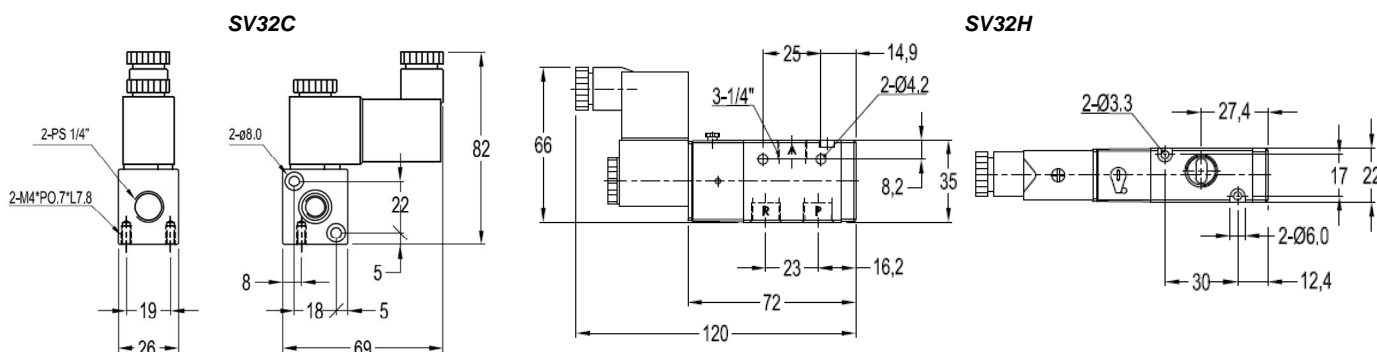
**PIPE CONN.:** 1/4"

**CONNECTIONS:** Male thread ISO7/1 Rp (BS21)

**INSTALLATION:** In any position



#### DIMENSIONS (mm):



TECHNICAL DATA		
Type	SV32C	SV32H
Body material	Aluminium alloy	
Sectional area	1,5 mm <sup>2</sup>	16 mm <sup>2</sup>
Applicable fluid	Compressed air (filtered through 40 micron filter element)	
Action	Direct acting with spring return	Internal pilot
Operating pressure	0 to 8 bar	
Maximum proof pressure	10 bar	
Ambient temperature	-10 °C to 60 °C	
Duty cycle	100% ED	
Coil type	DIN	
Protection class	IP65 (DIN 40 050)	
Insulation class	F	
Voltage tolerance	±10%	
Standard voltages	220VAC, 110VAC, 24VDC	
Net weight	0,16 Kg	0.18 Kg