

LIFTING POTS LIPO

DESCRIPTION AND OPERATION

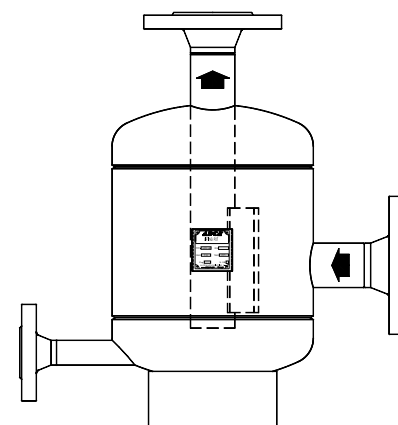
LIPO condensate lifting pots are used for rising condensate pipes eliminating steam and water hammering.

When the condensate is elevated to the condensate main in a higher level, the flash steam formed at a steam trap's outlet condenses in contact with colder condensate and steam bubbles implode, reducing its volume while passing to the liquid state. Vacuum is then suddenly formed and when filled again with the incoming condensate, it causes water hammer.

The air and flash steam cushion formed in the upper part of the lifting pot absorbs any shock while, in the bottom the condensate operates as a sealing liquid.



- OPTIONS:** Stainless steel construction.
- USE:** Condensate lines where condensate has to be lifted.
- SIZES:** DN 15 to DN100
- CONNECTIONS:** Flanged EN1092-1 or ANSI.
Different connections on request.
- CONSTRUCTION:** Carbon steel or stainless steel under request.
- INSTALLATION:** Vertical installation (inlet/outlet angle connections)
The differential pressure must be enough to overcome the pressure head and pipe friction.



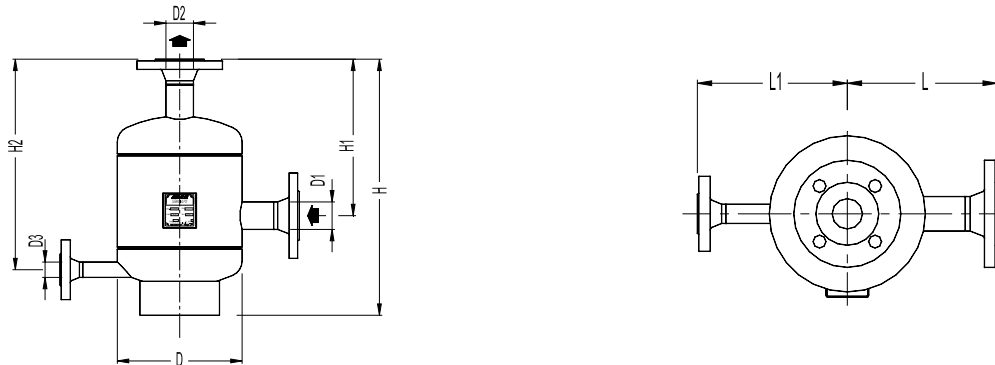
| LIMITING CONDITIONS | | |
|--|--------------|--------------|
| | Flanged PN16 | Flanged PN40 |
| PS - Maximum Allow able Pressure | 12 bar | 18 bar |
| TS - Maximum Allow able Temperature | 250°C | 250°C |

Minimum operating temp.: -10°C. Design code: AD-Merkblatt
Other conditions on request.

| CE MARKING (PED - European Directive 97/23/EC) | | |
|--|--------------|---------------|
| 12 bar | 18 bar | Category |
| DN 15 to 50 | DN 15 to 50 | 1 (CE Marked) |
| DN 65 to 100 | DN 65 to 100 | 2 (CE Marked) |

| DIMENSIONS (mm) | | | | | | | | | | |
|-----------------|-----|-----|-----|-----|-----|-----|-------|-------|------|----------|
| DN | H | H1 | H2 | L | L1 | D | D1 | D2 | D3 | WEIGHT * |
| 15 | 384 | 240 | 325 | 180 | 180 | 170 | DN15 | DN15 | DN15 | 9 |
| 20 | 384 | 240 | 325 | 180 | 180 | 170 | DN20 | DN20 | DN15 | 10 |
| 25 | 384 | 240 | 325 | 180 | 180 | 170 | DN25 | DN25 | DN15 | 11 |
| 32 | 450 | 275 | 370 | 210 | 210 | 220 | DN32 | DN32 | DN20 | 18,5 |
| 40 | 450 | 275 | 370 | 210 | 210 | 220 | DN40 | DN40 | DN20 | 19 |
| 50 | 450 | 275 | 370 | 210 | 210 | 220 | DN50 | DN50 | DN20 | 21 |
| 65 | 630 | 425 | 540 | 240 | 240 | 275 | DN65 | DN65 | DN20 | 35 |
| 80 | 630 | 400 | 540 | 240 | 240 | 275 | DN80 | DN80 | DN20 | 38 |
| 100 | 660 | 400 | 545 | 350 | 350 | 400 | DN100 | DN100 | DN20 | 72 |

* Weight in kgs to be confirmed .



TYPICAL INSTALLATION

