

HIGH CAPACITY FLOAT AND THERMOSTATIC STEAM TRAPS FLT 150 S (Fabricated steel) DN100 – DN150

DESCRIPTION

FLT150S float and thermostatic (integral air vent) steam traps series are designed for all types of low and medium pressure steam heating and process equipment.

Typical applications include unit heaters, heat exchangers, driers, jacketed vessels and all the applications where continuous drainage is essential.

Specially designed for sugar and alcohol refineries and where extremely high flow rates are involved.

Connections are flanged.

MAIN FEATURES

Modulating discharge.

Discharges condensate at steam temperature.

Unaffected by sudden or wide load and pressure changes.

Excellent air discharge (by high capacity thermostatic air vent).



OPTIONS: By-pass valve with aperture indicator.

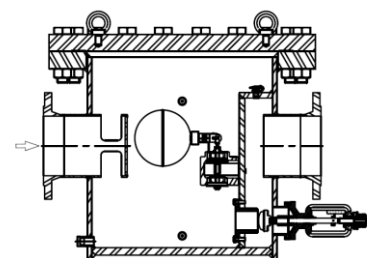
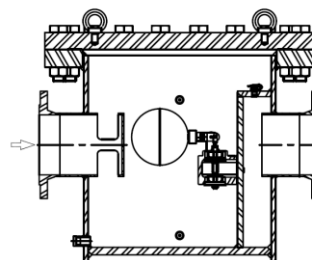
USE: Saturated steam.

AVAIL. MODELS: FLT150S-TW – Double mechanism.

FLT150S-O – Single mech. w/ orifice

SIZES: DN 100 to DN 150.

CONNECTIONS: Flanged EN 1092-1 PN6/PN10/PN16 or ANSI.


BODY LIMITING CONDITIONS

FLANGED PN 16 / ANSI 150 *	FLANGED PN 10	FLANGED PN 6	RELATED TEMP.
ALLOW. PRES.	ALLOW. PRES.	ALLOW. PRES.	
16 bar	10 bar	6 bar	50 °C
14,8 bar	9,2 bar	5,5 bar	100 °C
13,3 bar	8,3 bar	5 bar	200 °C
12,1 bar	7,6 bar	4,5 bar	250 °C

PMO - Max. operating pressure 12 bar

TMO - Max. operating temperature 250 °C

* According to EN1092-1:2007

FLOW RATE CAPACITY WITH ONE MECHANISM AND ORIFICE IN Kg/h

Dif. Press. bar	DN 100				DN 150		ΔQmax
	O1	O2	O3	O4	O5	O6	
0,1	22300	24100	26600	33700	43600	56400	18800
0,3	27400	30300	34200	45400	61200	81400	22700
0,7	32200	36200	41800	57700	79900	108600	26200
1	34700	39500	46500	65800	93100	128100	27700
1,4	37000	42600	50500	72900	104400	144900	29200
2	40700	47600	57200	84800	144900	172900	31700
Orifice Nr.	O1	O2	O3	O4	O5	O6	

CE MARKING

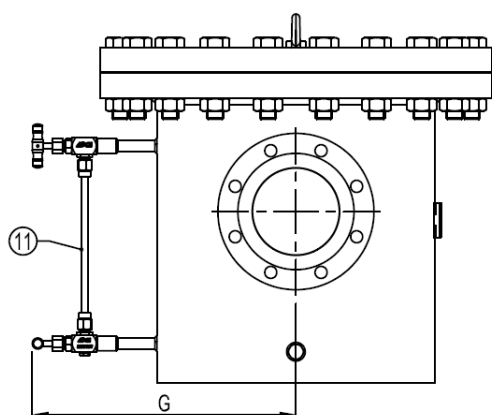
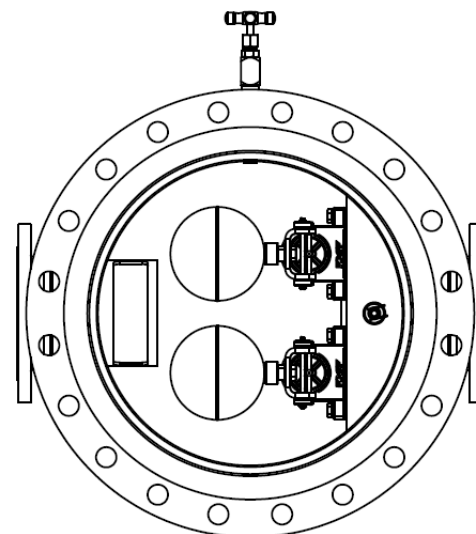
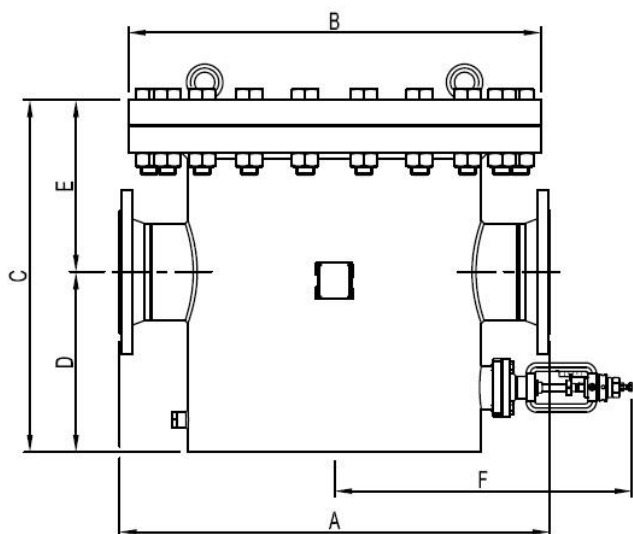
(PED - European Directive)

Rated PN 6	Category
FLT150S-TW DN100 - DN150	2 (CE Marked)
Rated PN 10	Category
FLT150S-TW DN100 - DN150	2 (CE Marked)
Rated PN 16	Category
FLT150S-TW DN100 - DN150	3 (CE Marked)

Example: One FLT150-O DN150-05 (with orifice nr.5), operating at a D.P. of 0,3 bar, must have a minimum flow of 38500Kgs/h (61200-22700). The minimum flow rate is necessary to ensure that the orifice does not waste steam.

FLOW RATE CAPACITY WITH DOUBLE MECHANISM WITHOUT ORIFICE IN Kg/h

MODEL FLT	SIZE DN	DIFFERENTIAL PRESSURE (bar)															
		0,1	0,3	0,5	1	1,5	2	2,5	3	3,5	4	5	6	7	8	10	12
150S/TW	100-150	37600	45400	49000	58000	62000	68000	74000	76000	79000	84000	87000	91000	94000	96000	99000	100000



DIMENSIONS (mm)											
MODEL	SIZE	A	A	A	B	C	D	E	F	G	WGT.
FLT150S	DN	EN	ANSI150#	ANSI300#							Kg
PN 06	100	745	808	827	645	590	312	279	515	480	231
	125	745	827	846	645	590	312	279	515	480	240
	150	745	827	846	645	590	312	279	515	480	247
PN 10	100	745	794	813	670	595	312	284	515	480	270
	125	745	813	832	670	595	312	284	515	480	276
	150	745	813	832	670	595	312	284	515	480	284
PN 16	100	745	794	813	715	610	312	298	515	480	377
	125	745	813	832	715	610	312	298	515	480	385
	150	745	813	832	715	610	312	298	515	480	401

MATERIALS		
POS. Nr.	DESIGNATION	MATERIAL
1	Body	P250GH / 1.0460 ; P235GH / 1.0305 ; S355J2G3 / 1.0570 ; S235JRG2/1.0038
2	Cover	P250GH / 1.0460
3	*Gasket	Graphite
4	*Seat	CF8 / 1.4308
5	*Valve	AISI420 / 1.4021; CF8M / 1.4408
6	*Lever	AISI316 / 1.4401 ; AISI304 / 1.4301
7	*Float	AISI304 / 1.4301
8	*Air vent	Stainless steel (Thermostatic)
9	Bolts	Steel 8.8
10	By-pass valve	GJS-400-15 / 0.7040
11	Level indicator	Bronze ; Borosilicate glass

*Available spare parts.

