

COMPACT TRAPPING STATION CTS4U (For use with universal pipeline connectors)

DESCRIPTION

The CTS4U is designed as a complete and compact steam trap station used in steam systems where a simplified and economical maintenance program is desired. It has been designed to replace a traditional multi-component trap station system.

Typical installations are drip service on steam lines, tracing and small process equipment.

Two bolt flange connector permits trap replacement in minutes without disturbing the piping.

The CTS4U trapping station fits all universal swivel connector steam traps.

Connections are female screwed or flanged on request.



MAIN FEATURES

Remains in-line permanently, making the replacing of new traps easier and quicker.

Universal steam traps can swivel 360° allowing any pipe orientation during installation.

The universal flange allows the trap to be fitted in the correct position, regardless of pipeline configuration.

Built-in strainer and check valve.



OPTIONS: Spool piece double upstream isolation.
Blowdown valve (strainer cleaning).

USE: Saturated and superheated steam.

AVAILABLE

MODELS: CTS4U - Stainless steel construction.

SIZES: DN 1/2" and 3/4"
DN 15 and DN25.

CONNECTIONS: Female screwed ISO 7/1 Rp (BS21).
Flanged EN 1092-1 or ANSI on request.



With double upstream isolation valve

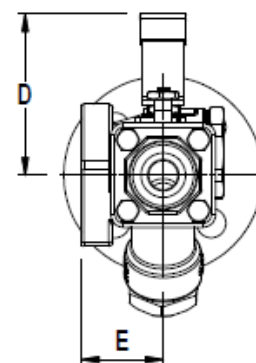
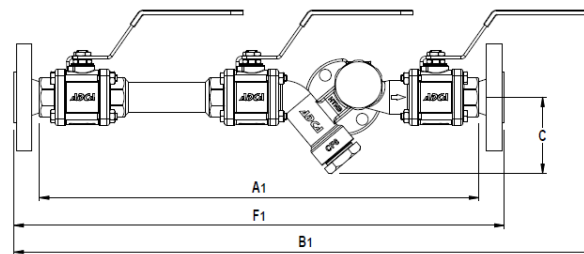
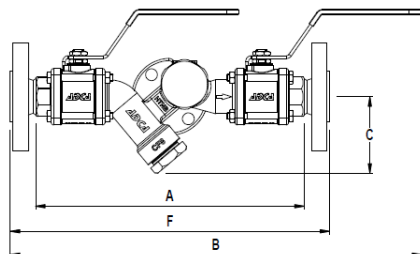
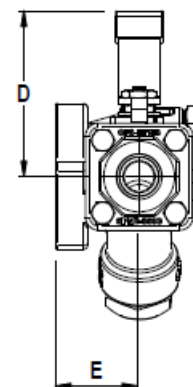
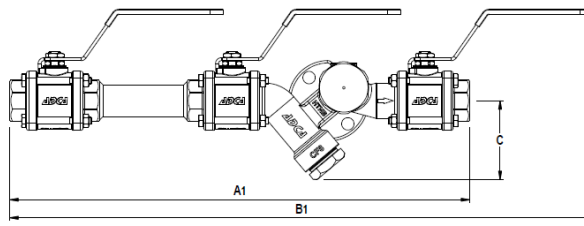
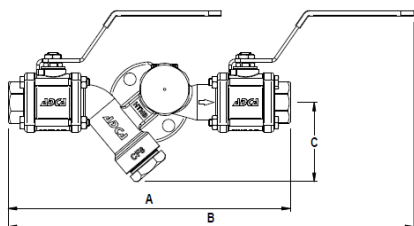
LIMITING CONDITIONS

Body design conditions	PN 40
Maximum operating pressure for saturated steam	17,5 bar
Maximum operating temperature	230 °C @ 10 bar
Minimum operating temperature	-10 °C

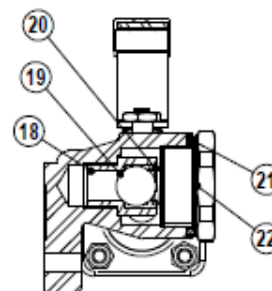
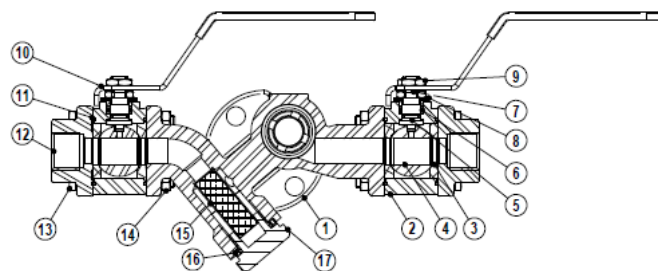
DIMENSIONS (mm)

SIZE DN	A	B	C	D	E	F	WGT Kg	A1	B1	F1	WGT Kg
1/2" - 15	240	345	67	77	39	284	3	390	485	434	4
3/4" - 20	240	345	67	77	39	304	3	390	485	454	4
25	240	345	67	77	39	304	3	390	485	454	4

Weights shown correspond to the threaded design, consult factory for the flanged versions.


MATERIALS

POS.	DESIGNATION	MATERIAL
1	Main valve body	CF8 / 1.4308
2	Ball valve body	CF8 / 1.4308
3	* Seat	PTFE / GR
4	* Valve ball	AISI316L / 1.4404
5	Stem	AISI316L / 1.4404
6	* Stem seals	PTFE / GR
7	* Lock washers	AISI304 / 1.4301
8	* Spring washers	AISI304 / 1.4301
9	Stem nut	A2 - 70
10	Handle	AISI304 / 1.4301 - Vinyl
11	Body seal	PTFE
12	Cap	CF8 / 1.4308
13	Bolts	AISI304 / 1.4301
14	Nuts	A2 - 70
15	* Strainer screen	AISI304 / 1.4301
16	* Gasket	St.Steel / Graphite
17	Strainer plug	AISI304 / 1.4301
18	* Check valve seat	AISI304 / 1.4301
19	* Check valve ball	AISI304 / 1.4301
20	* Spring	AISI 302 / 1.4300
21	* Gasket	St.Steel Graphite
22	Check valve cover	AISI 304 / 1.4301



* Available spare parts.